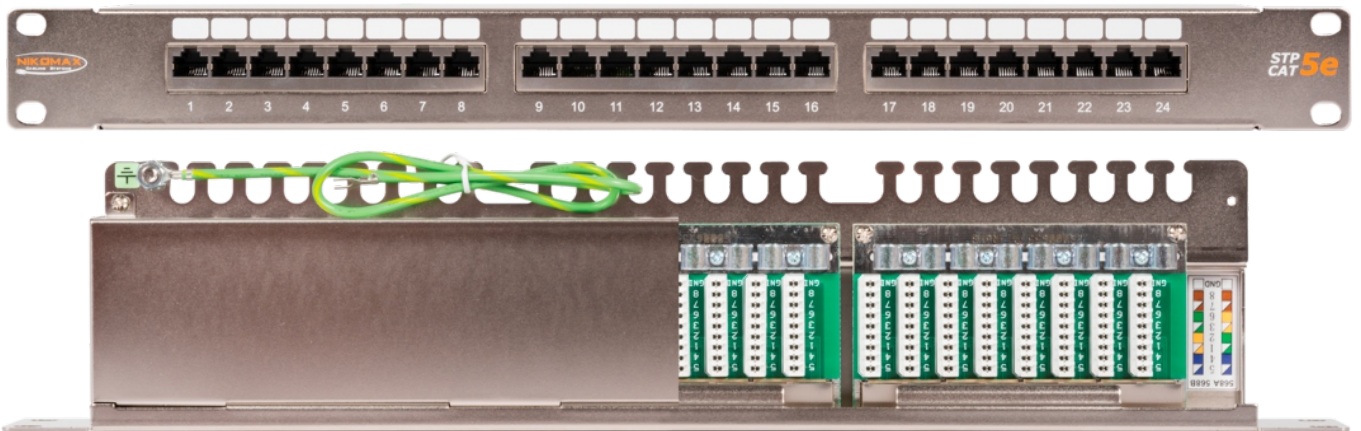


NMC-RP24SD2-1U-MT

NIKOMAX 19", 1U, 24, .5e (D), 100 , RJ45/8P8C, 110/KRONE, T568A/B,

(-)

NIKOMAX NMC-RP24SD2-1U-MT
19"



- 1 .
- 1 .
- 24 .
- 4 .
- 1 .

10BASE-T, 100BASE-TX, 100BASE-T4, 1000BASE-T, 2.5GBASE-T, ATM-25, ATM-51, ATM-155, 100VG-AnyLan, TR-4, TR-16 Active, TR-16 Passive

ISO/IEC11801, EN 50173 TIA/EIA-568

	5e
	100
	24
	1U
	RJ45/8P8C
	-24-22 AWG (0,50-0,65)
IDC ()	110/KRONE
	T568A/B
	750-
	()
	,
	19"

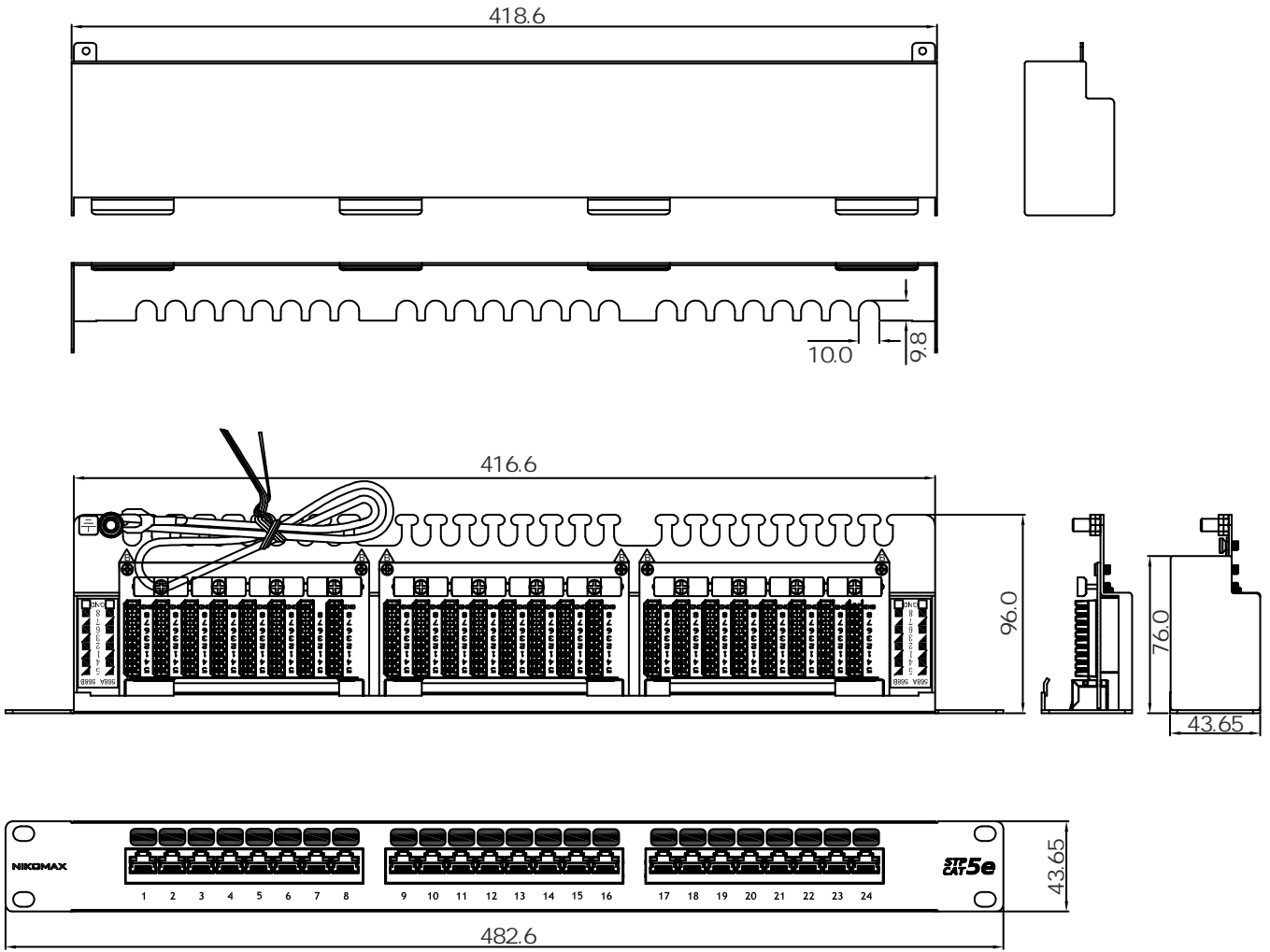
	1,5
	1
	(50) (100)
IDC	
IDC	(100)

	1 - 100
	1000 , 60 1
	20
IDC	2,5
(NVP)	2,5
(500)	500 M *

	100
	-40 +70 °C
	0 +50 °C
	-10 +60 °C

	5
	25

	510 105 70
	1,590
	0,003748 ³



40 +70°C.

- 1.
- 2.
- 3.
- 4.
- 5.

()